

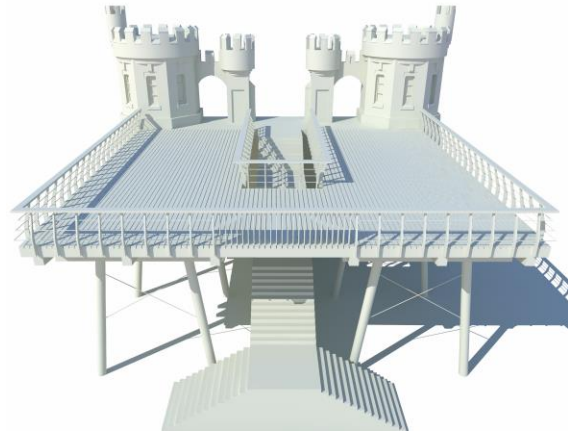


The Original Pier

The painting (*left*) shows the wreck of the Safron, having damaged the central portion of the already truncated pier, in 1880. This section was repaired, prior to further collisions by vessels, which resulted in the removal of the pier entirely. All that was left, and stood proud ever since 1903, are the Pier Towers (*right*)



For too long the towers have stood with no real purpose, a reminder of when Withernsea had a Pier. Until now!



The Proposed New Pier

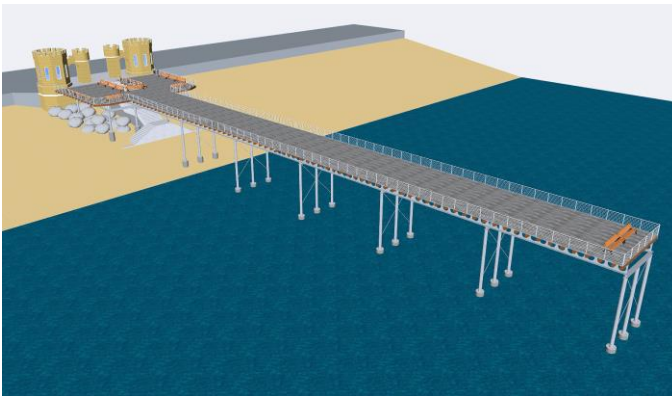
To be built in Four distinct and separate stages, the new pier will utilise the Pier Towers, from which access will be gained either onto the pier itself, or down the existing stairway onto the beach.

STAGE ONE

The construction of a wide spacious platform with seating allowing views out over the beach and the sea will be the first step in bringing the pier experience back to Withernsea (*left and right -Illustrations from our architect, Robert Blundell, at 3-xa Design*)

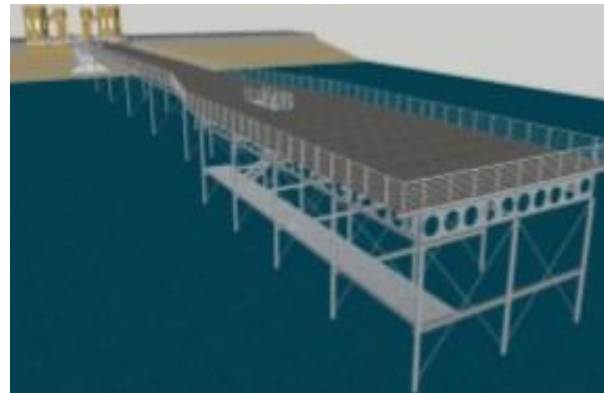


STAGE TWO



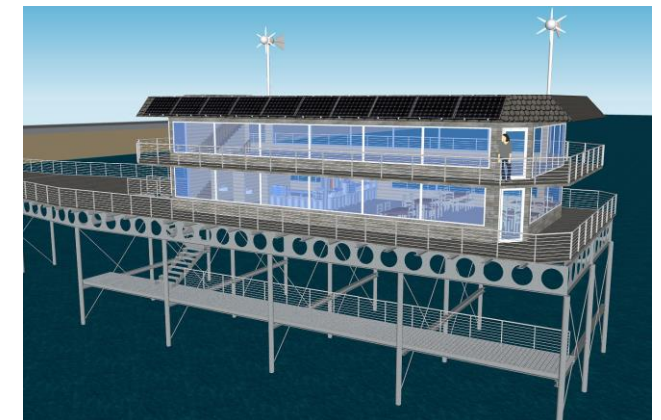
Stage Two will be the start of the Pier proper, extending out over the sea a further 400 feet. The end will be over the water, even at low tide

STAGE THREE



Stage Three will be the Pier head construction, a further 120 feet out into the sea, incorporating a fishing/boat platform under the main deck

STAGE FOUR



The Final **Stage Four** of construction will be a building at the end of the Pier. Current plans are for a café, with a renewable energy Visitor centre and research facility.

PAST

A pier first proposed by Anthony Bannister in 1870, 1200 feet in length, was begun in 1875, completed in 1878, and proved a popular seaside attraction.

In 1880 the pier was struck by two ships in a great storm, one of which took out 200 feet in the middle of the pier. In 1890, half the pier was destroyed when struck again.

Another strike by a vessel in 1893 resulted in fifty feet of the pier remaining. It was all removed in 1903, leaving the Pier Towers edifice as the sole reminder.

PRESENT

The Promenade is a major attraction in Withernsea, and the original Pier Towers are one of the landmarks of the town, an instantly recognizable icon to all, locals and visitors alike.

FUTURE

The aim of the Withernsea Pier and Promenade Association, founded in 2016, is to rebuild a Pier at Withernsea, to enhance the profile of the town as a popular Seaside Resort, to complement attractions in the Holderness area, and increase tourism.



Want to get involved?

The Withernsea Pier & Promenade Association is run by a committee of volunteers.

Membership of the WPPA is available at £10 per person

Website withernsea1.co.uk/pier

Email pier@withernsea1.co.uk

Facebook Withernsea Pier

Registered Office

2 High Brighton Street

WITHERNSEA HU19 2HL

(01964) – 615430

Location



Located on the North East Coast of Yorkshire, 20 miles East of Hull, Withernsea

WITHERNSEA PIER & PROMENADE ASSOCIATION



Rebuilding Withernsea Pier

