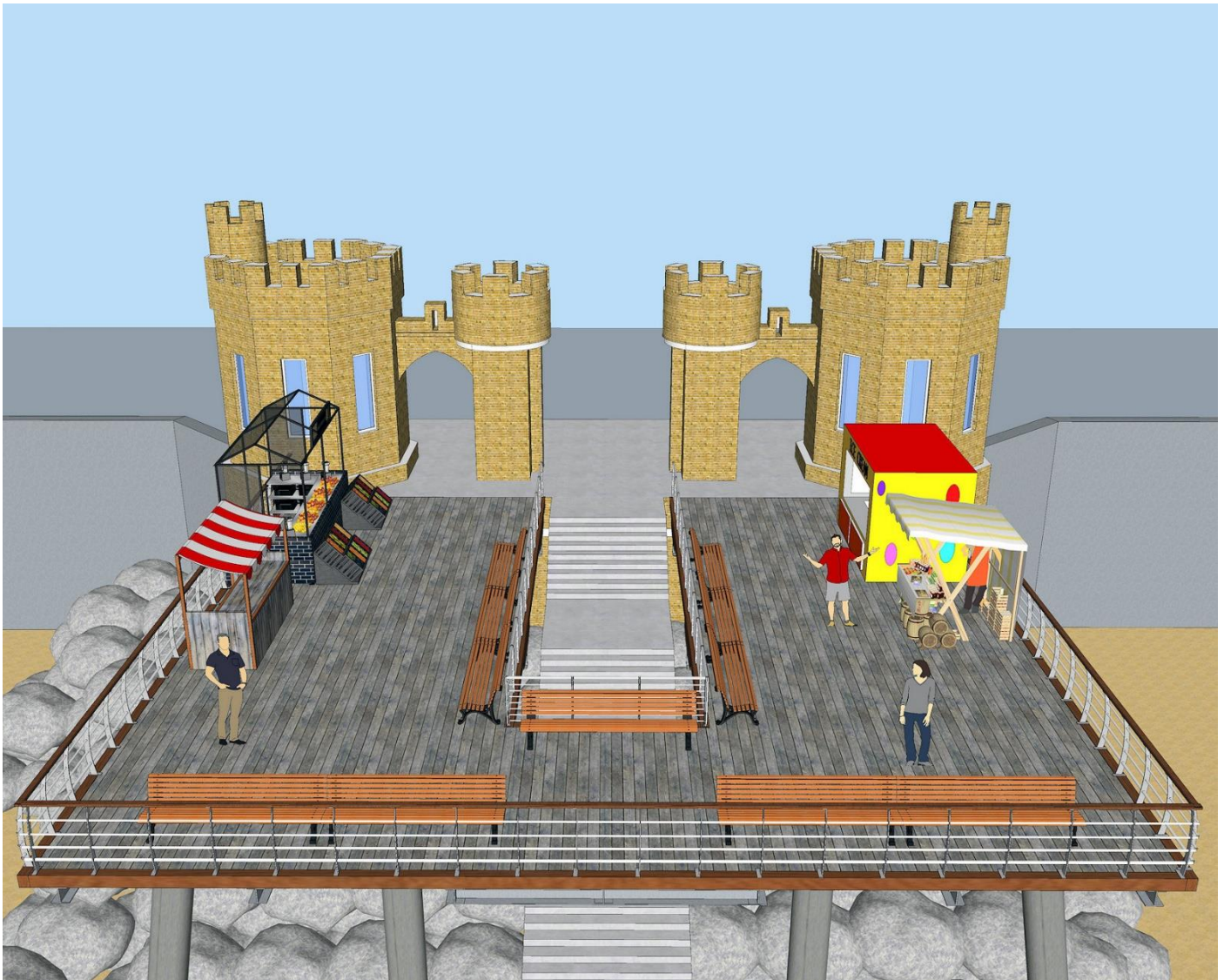


Withernsea Pier

The big picture

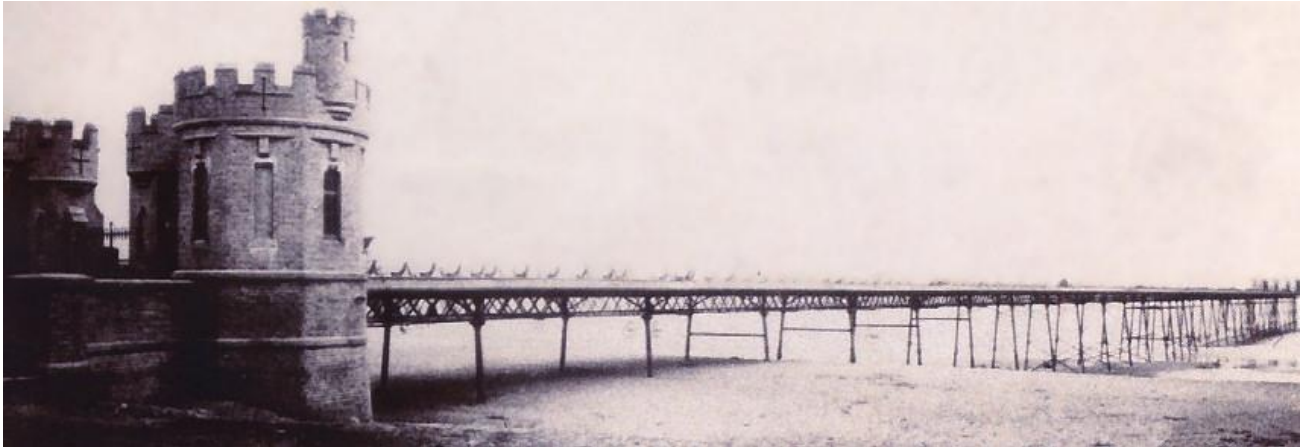


May 2021

Introduction

The Withernsea Pier and Promenade Association (WPPA) was formed in March 2016, with the intent of rebuilding a Pier at Withernsea using the iconic Pier Towers as a starting point.

The Pier will be constructed in stages, with each stage being taken into use as it's completed.



The original Pier

Withernsea's original Pier was completed in 1878. Initially it was a great success drawing crowds of tourists to the town. Sadly, it was repeatedly hit by ships causing severe damage to the pier. During a storm in 1880 a larger vessel, the Saffron, took out two hundred feet in the middle of the pier. Ten years later it was hit by the fishing boat "Genesta", destroying more than half the pier. The final blow came in 1893 when it was struck by the Grimsby bound Henry Parr. The piles of the pier were knocked down, span after span, until there was only a section of fifty feet remaining of the once grand pier.

The remainder of the pier was finally removed during the construction of the sea wall and the promenade, 1903-1909.

Rebuilding the pier has been suggested many times over the years, and despite being one of the top ten priorities for Withernsea, it has never happened.



Pier Towers



After the demise of the pier, the Pier Towers were left on the seafront in splendid isolation, about one hundred yards south of the Withernsea Promenade. The once proud entrance to the pier no longer served a purpose and the towers fell into decline. In 1917 the promenade was extended to meet up with the towers and the towers were repaired.



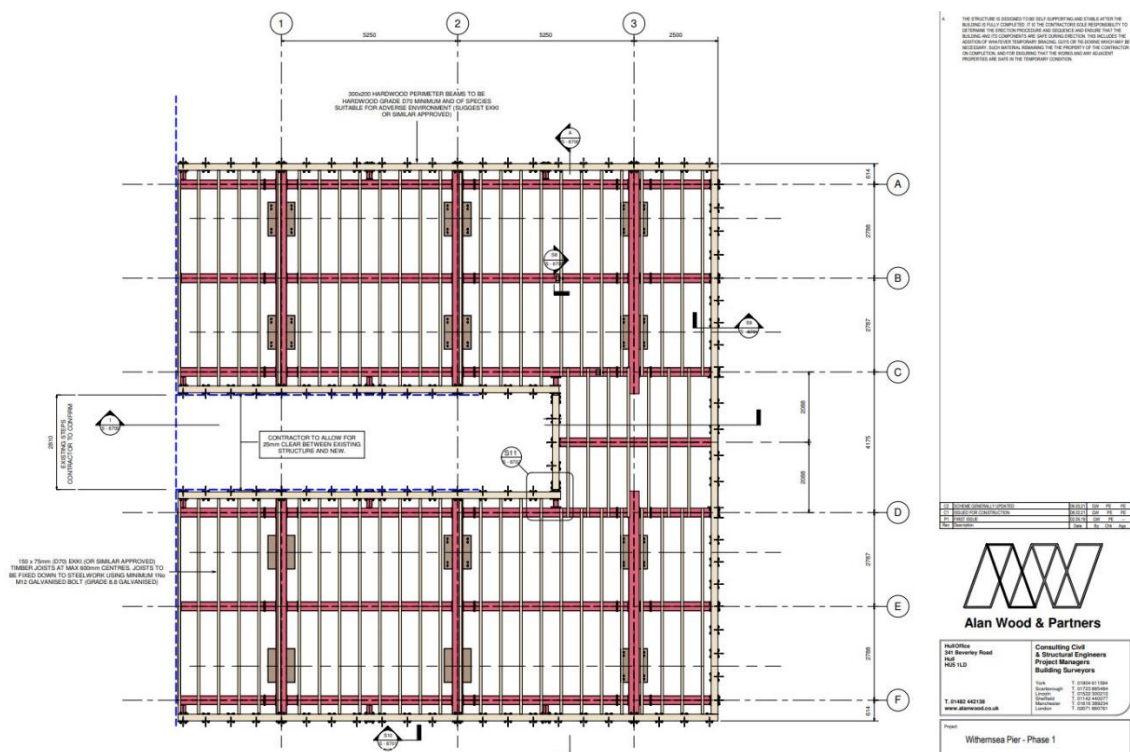
The towers have stood empty and disused for a long time. With a grant from the Coastal Revival Fund, the towers were extensively repaired in 2017. Now fully restored to their former glory they form the centrepiece of the Withernsea Promenade. The Pier Towers are run and maintained by the Withernsea Pier and Promenade Association. The North Towers is home to the Coastal Change Observatory. It also shows the plans for the new Withernsea Pier, other displays about the area, and has a small souvenir shop. In the South Tower there are various arts and crafts stalls by local artists and vendors.

Stage 1

The first stage of reconstruction is designed to give the towers back their original purpose as a grand entrance, and at the same time provide a focal point along the promenade.

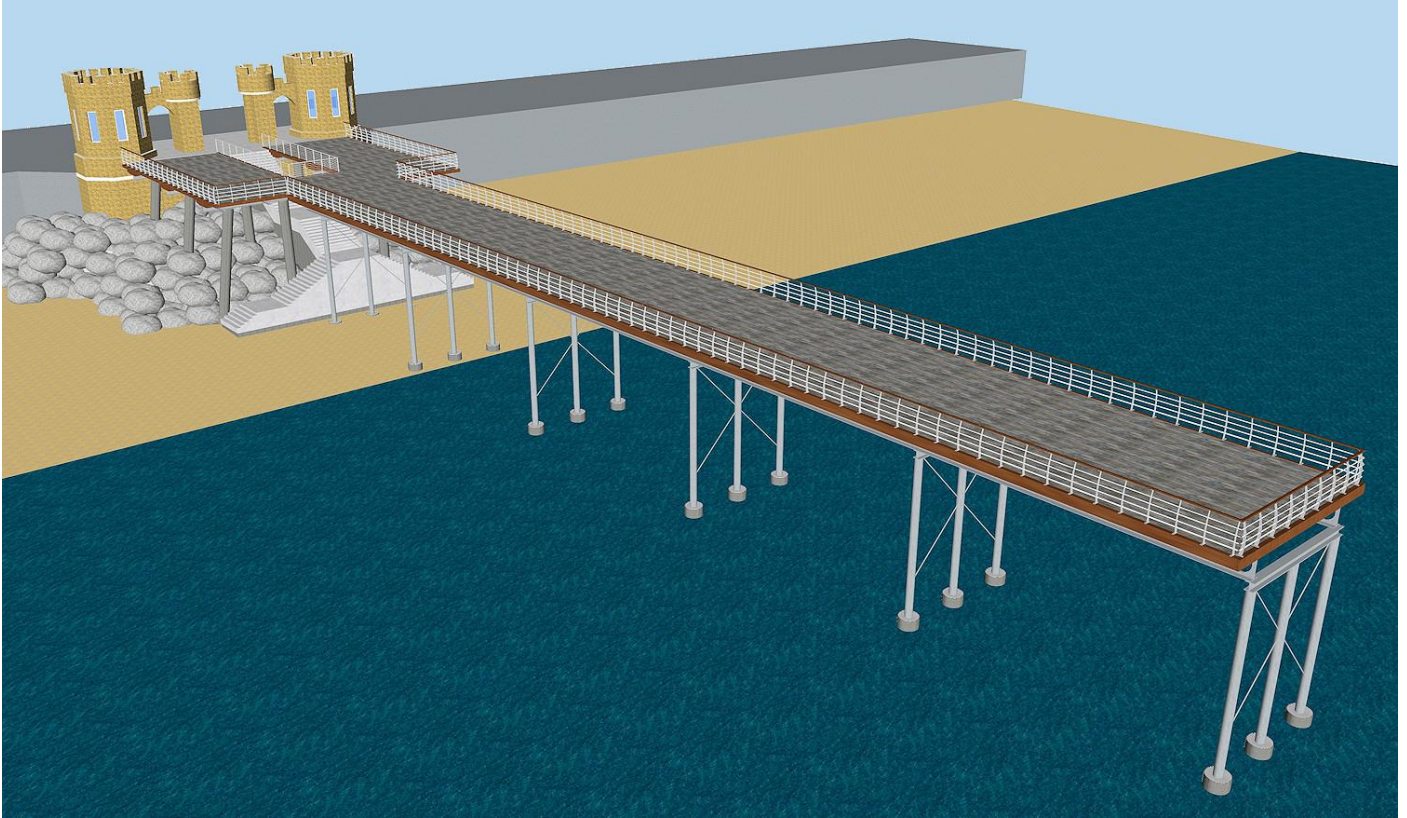


Stage 1 will be a wide and spacious, 16meters wide by 16.5 meters long Viewing Platform. The 220sq meter timber decking will be supported by a steel substructure held up by 12 steel piles. There will be plenty of room for at least 4 stalls and ample seating to enjoy the sea views.

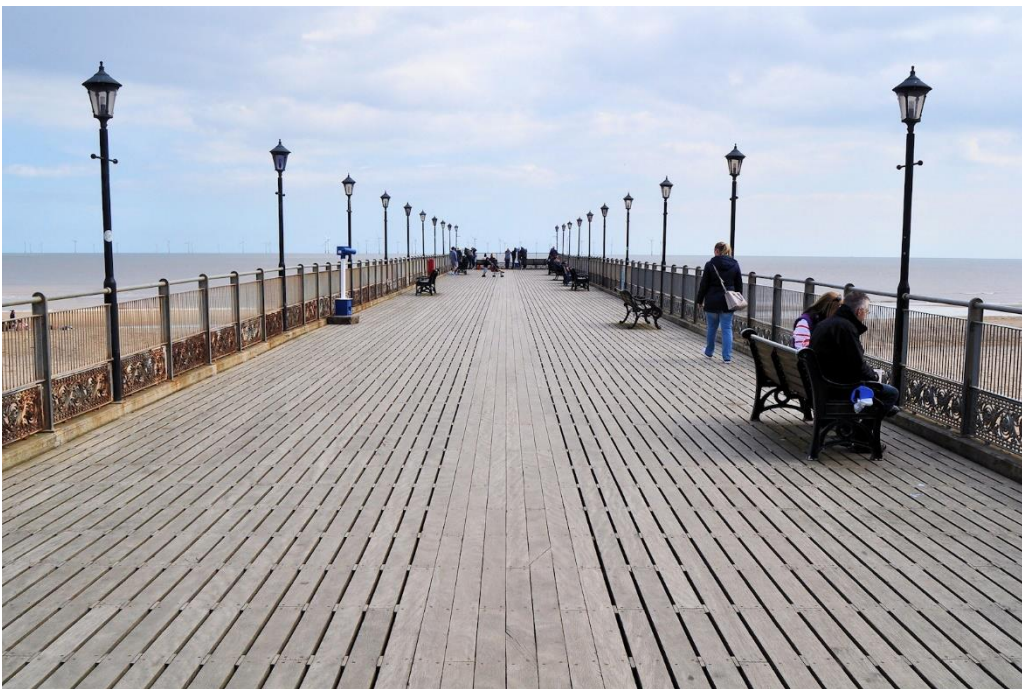


Detailed construction drawings have been produced by Alan Wood and Partners ready for the first stage of the build.

Stage 2

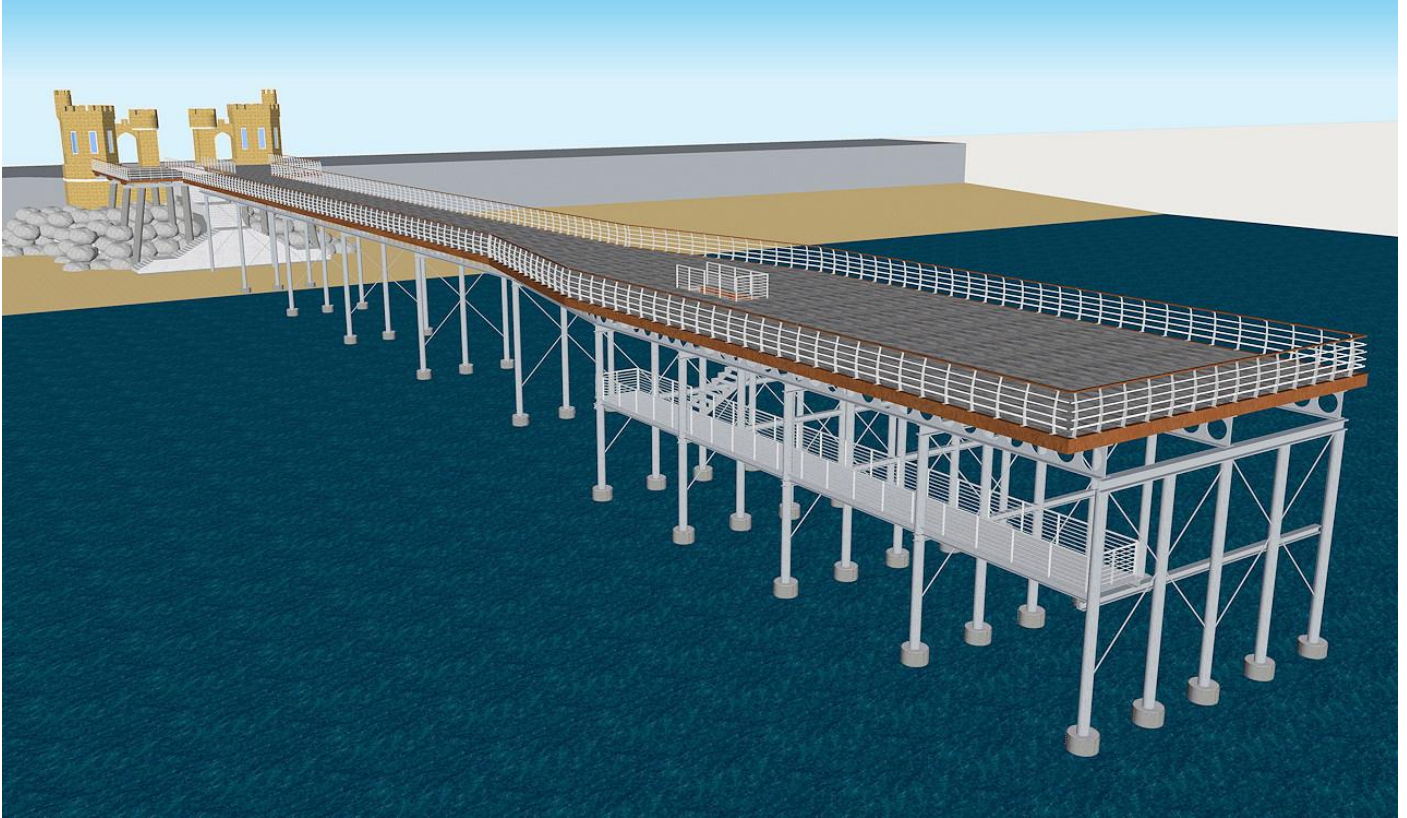


Stage Two will provide the semblance of a pier, with the projection outwards from Stage One. It is envisioned that it will consist of up to 10 identical 12meter (40ft) sections. This will ensure that the end of the pier will be in the sea, even at low tide. It will be similar in size to the 118 m long Skegness Pier which won a Trip Advisor Certificate of Excellence Award in May 2015.



Skegness Pier

Stage 3

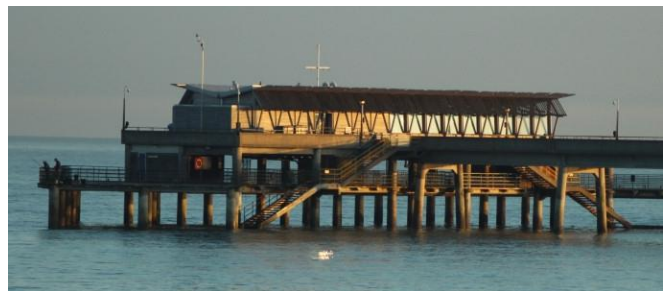


Stage Three will provide the “Pier Head”. A destination to walk to, and to sit and admire the splendid sea views. The plan includes building a fishing/boat platform under the main deck.

The Holderness coast has become very popular with anglers all year round and hosts the Paul Roggeman European open beach championship every year. Withernsea Pier will become the best place to fish for local and visiting anglers.

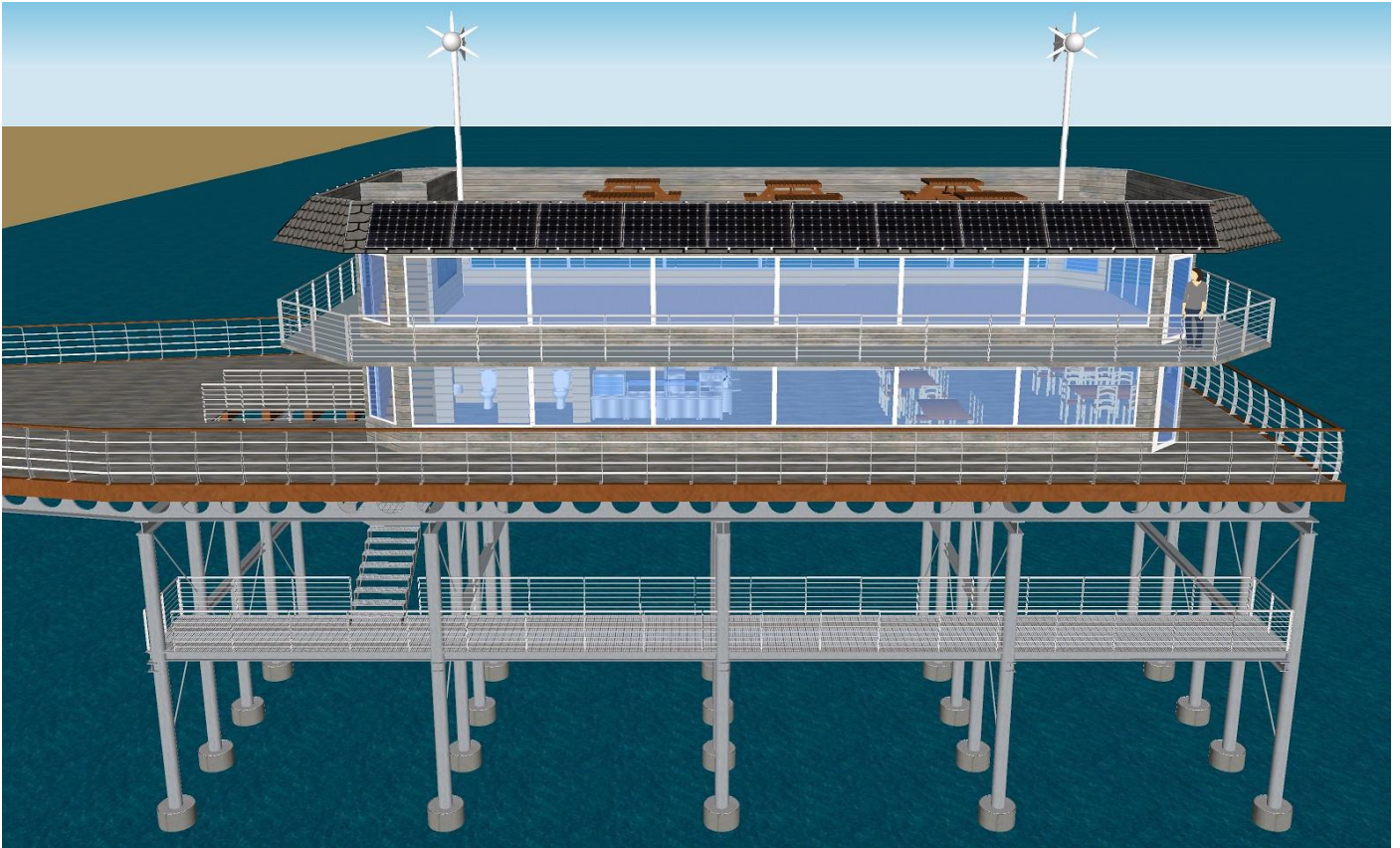


Deal Pier also has a landing and fishing deck and has held many hundreds of fishing competitions.

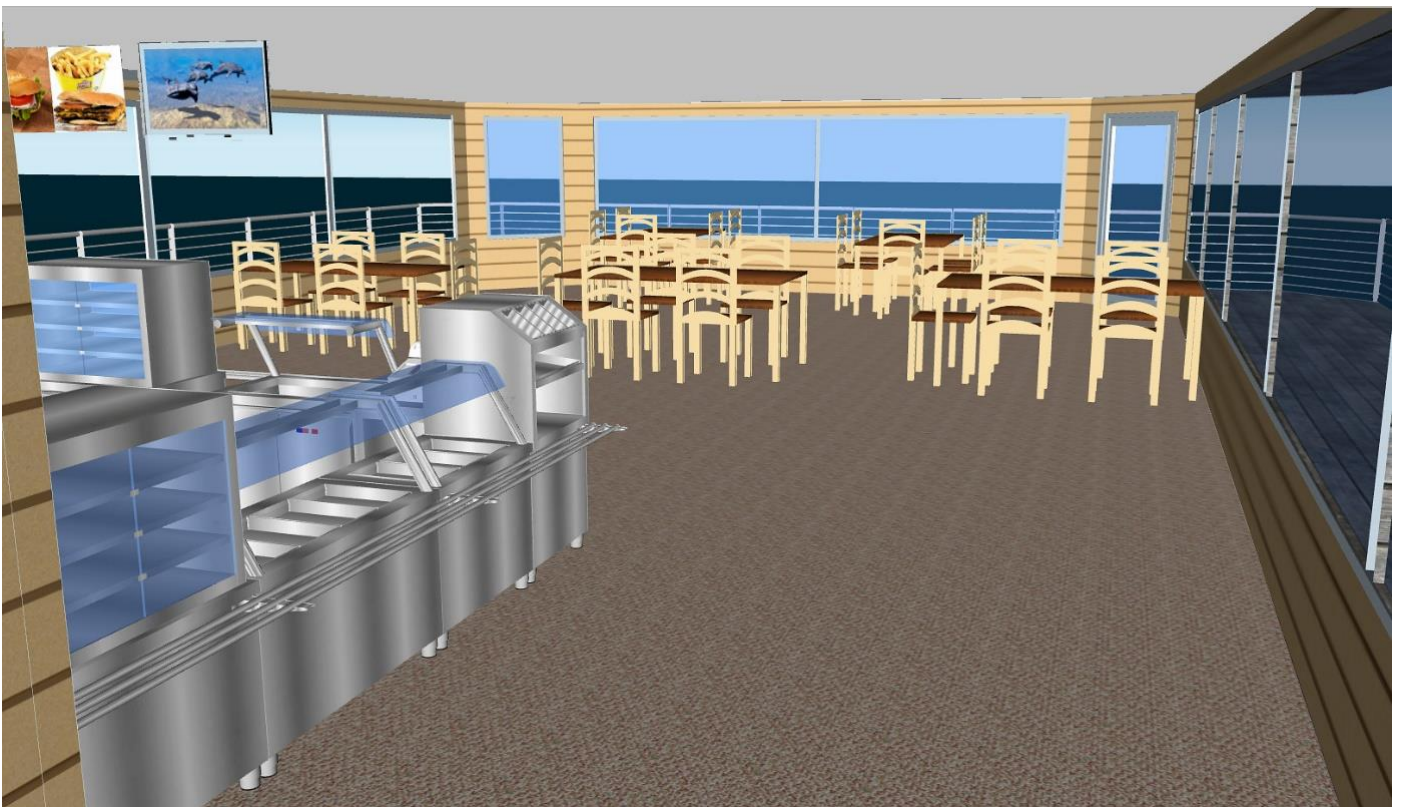


Traditionally there were boat trips from Withernsea to Spurn Point, Grimsby and Cleethorpes. The boat platform would make this a possibility once again along with sea fishing trips and sightseeing tours.

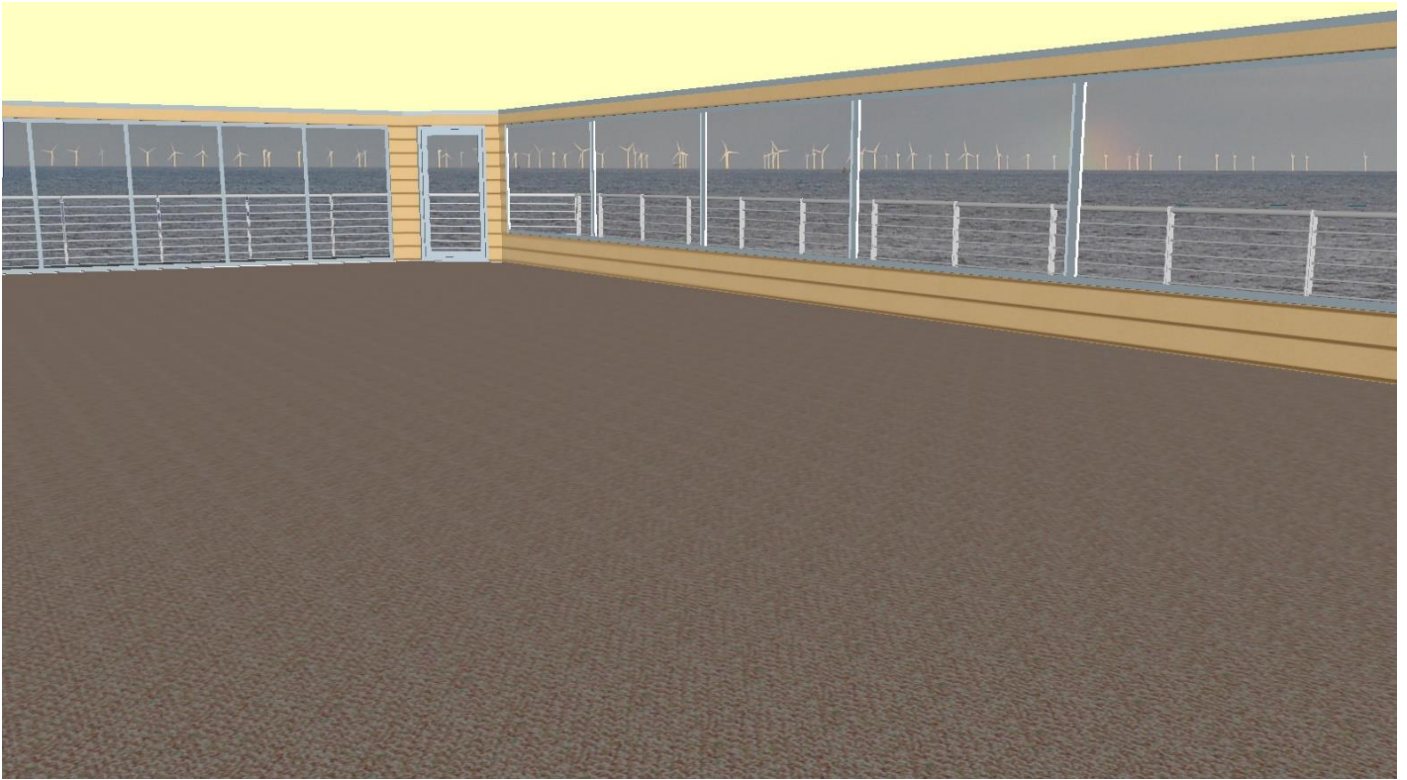
Stage 4



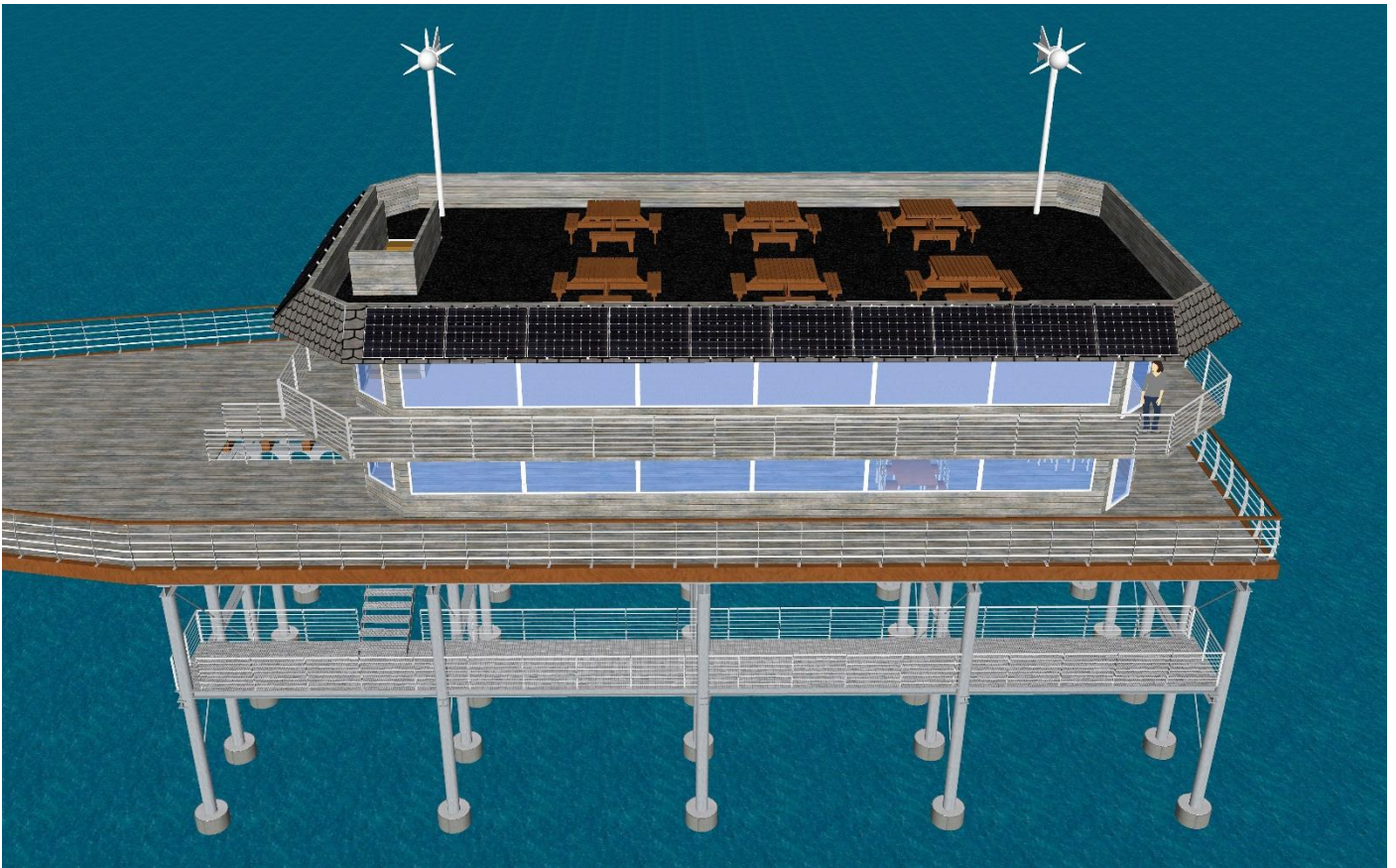
Stage Four will be a two-storey building at the end of the pier.



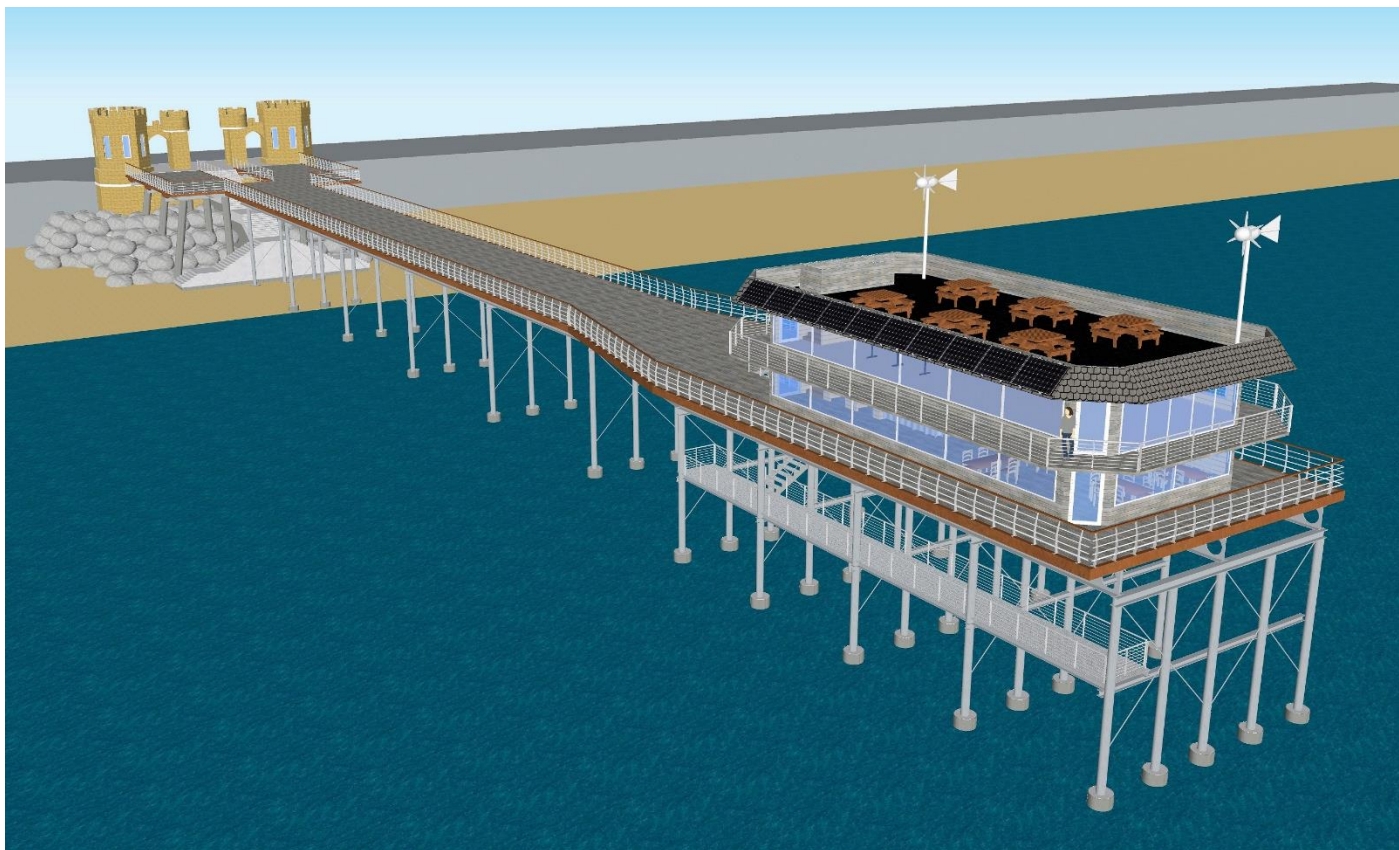
The ground floor will include a cafeteria with indoor seating. Large windows will give panoramic views in all directions.



The first floor will be open plan with information about different forms of renewable energy: Solar power, wind turbines, wave and tidal power. We will also have information about sea life and information about pollution and the impact on our environment. Being open plan, the first floor can also be used for functions, conferences, wedding receptions etc.



The roof will be a viewing area and have two small wind turbines and an array of solar panels. This will make the building carbon neutral whilst demonstrating the renewable energy displays on the floor below.



The completed Withernsea Pier

Vision statement

Looking forward to when this project is completed, we will say.....

“Withernsea Pier is the focal point of the Withernsea promenade, accessible through the iconic Pier Towers gateway.

People come to enjoy the experience of being on the 560-foot-long pier, strolling over the sea, breathing the fresh air and taking in the beautiful ever-changing vista over the North Sea.

The Pier provides a unique combination of opportunities for people to enjoy a good time over the sea in Withernsea:

- Exploring the renewable energy centre and seeing renewable energy in action
- Fishing from the platform under the main deck
- Learning about the natural environment, local history and attractions
- Visiting the café and stalls for light refreshments, and
- Simply enjoying the view

The two storey Renewable Energy Centre at the end of the Pier is open to the public and available for research and educational visits. Visitors can see renewable energy in action - the Centre has a wind turbine and solar panels on the roof and a small hydro electric generator, and a wave and tidal generation system are installed under the pier and there are excellent views of the wind turbines out at sea.

Withernsea Pier has been completed in four stages with the enthusiastic and tenacious support of residents, local businesses, partners and a range of funders and increased the local people’s pride in the town”

Withernsea Pier and Promenade Association are working with statutory and voluntary sector partners, local businesses and the community in Withernsea and surrounding area to deliver our Vision.